



**slate**  
an elements studio

# the cinch experience





# contents

---

## overview

Cinch by Slate	pg. 03
Cinch process	pg. 04
quality + warranty	pg. 05

## AMQ private offices

private office options	pg. 07-14
private office finishes	pg. 15

## AMQ benching

benching options	pg. 17-18
benching finishes	pg. 19

## AMQ workstations

workstation options	pg. 21-25
workstation finishes	pg. 26

## AMQ accessories

monitor arms	pg. 28
HAT	pg. 28
storage options	pg. 29-30

## ancillary spaces

inspiration for your space	pg. 32-35
----------------------------	-----------

## seating + lounge

task	pg. 37-38
multi-purpose	pg. 39-40
stools	pg. 41
training + conference	pg. 42
lounge	pg. 43-44
seating + lounge finishes	pg. 45-53

## ancillary tables

multi-purpose	pg. 55
training + conference	pg. 56
table finishes	pg. 57-59

## Blu Dot ancillary

in-stock	pg. 61
best sellers	pg. 62

# workplace design, in a cinch

you need it fast • we make it simple • always on budget

With speed and simplicity in mind, we have cleared your path to creating beautiful and functional workplaces that won't break the bank.

From a single chair to an entire office, you can customize products from our specially curated Cinch Catalogue with the confidence that they are built to last, but if something does go wrong, there will be a real person on the other end of your call for help.

Your time is money, but quality should never be compromised.

**cinch**  
by slate



01

design.

Together, we select your products, fabrics and finishes from the Cinch Catalogue while ensuring everything will fit in your office.

one week



02

manufacture.

Our manufacturer partners are busy building everything to your specifications and prepping your products for installation.

two-four weeks



03

install.

We coordinate everything to make delivery and installation easy for you and resolve any issues.

one week

# accelerated process



# quality products, fast

## On-going service and support

Through the Cinch program, you are supported by Slate's local service technicians who are real people helping you in real time. Our online service portal allows you to submit or check a service request when it is most convenient for you.

## AMQ

All AMQ products carry a **10-year warranty**, and through the Cinch program, you are supported by Slate's local service technicians who are real people helping you in real-time. Our online service portal allows you to submit or check a service request when it is most convenient for you.



## Friant

We understand you are focused on valuable and cost-effective solutions. To safeguard your investment, Friant offers a **limited lifetime warranty**. Written notice of a defect within the applicable warranty period is required.



## Ancillary

The ancillary catalogue is composed of Steelcase Ancillary Collection products, a community of industry-leading furnishings brands with classic, modern and innovative designs that help you create beautiful places that work, your way. Most of these products have a limited lifetime warranty, but your Slate contact can help advise you on specific products.

## our ancillary manufacturing partners

Steelcase AMQ SitOnIt • Seating

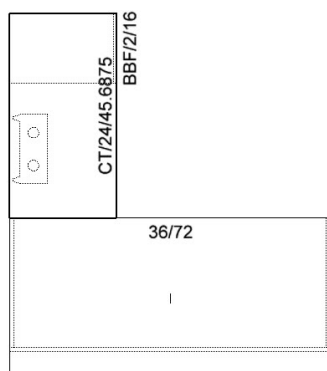
KFi STUDIOS global HON. BLU DOT



**AMQ private offices**

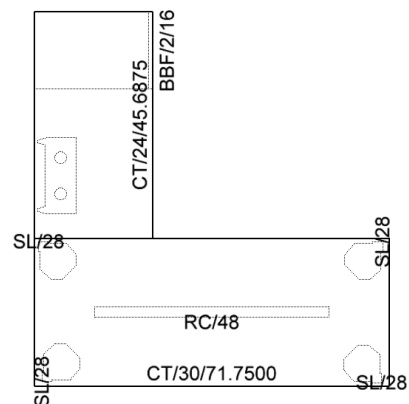
## AMQ private office option A

- 1 Fixed Height Desk**
  - 36"d X 72"w
  - Laminate Top with Full End Panels
  - Full Modesty Panel
- 2 Fixed Height Laminate Return**
  - 24"d X 46"w
  - Box/Box/File Pedestal
  - Metal Ledge Pull
  - Locking
  - Cable Management and Boost Desktop Power Module in White
- 3 Optional Accessories**
  - Clamp Mount Monitor Arm
    - Available Single or Double



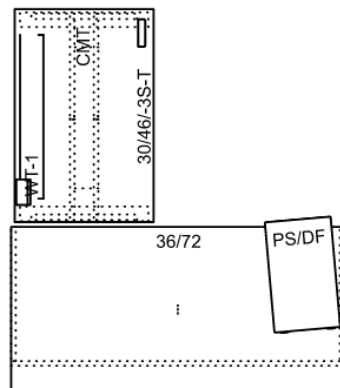
## AMQ private office option B

- 1 Fixed Height Desk
  - 30"d X 72"w
  - Laminate Top with Metal Post Legs
- 2 Laminate Modesty Panel
  - 48"w x 13"h
- 3 Fixed Height Laminate Return
  - 24"d X 46"w
  - Box/Box/File Pedestal
  - Metal Ledge Pull
  - Locking
  - Cable Management and Boost Desktop Power Module in White
- 4 **Optional Accessories**
  - Clamp Mount Monitor Arm
    - Available Single or Double
  - Revi Mobile Pedestal with Cushion



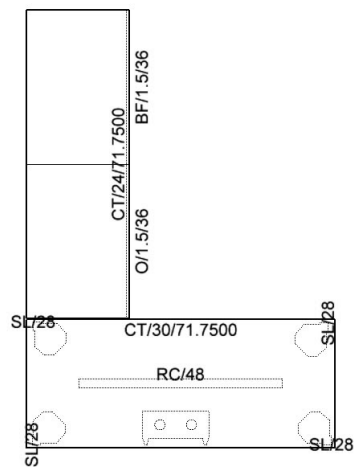
## AMQ private office option C

- 1 Fixed Height Desk**
  - 36"d X 72"w
  - Laminate Top with Full End Panels
  - Full Modesty Panel
- 2 Activ Electric Height Adjustable Desk**
  - Stage 3, 29"d X 46"w
  - Laminate Top with Metal T Leg
  - Cable Management and Boost Desktop Power Module in White
- 3 Revi Mobile Pedestal**
  - Verve Fabric Cushion Top
  - Drawer/File Configuration and Pencil Tray
- 4 Optional Accessories**
  - Clamp Mount Monitor Arm
  - Available Single or Double



## AMQ private office option D

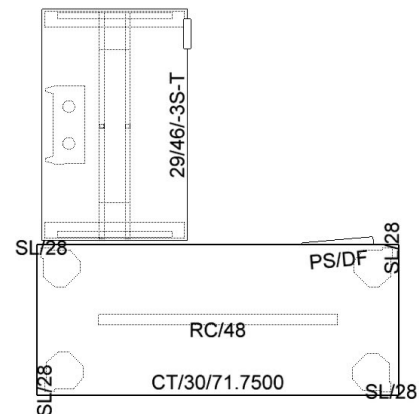
- 1 Fixed Height Desk
  - 30"d X 72"w
  - Laminate Top with Metal Post Legs
  - Cable Management and Boost Desktop Power Module in White
- 2 Laminate 1.5h Box/Drawer Credenza
  - 24"d X 36"w
  - Metal Ledge Pull
  - Locking
- 3 Laminate 1.5h Open/Open Credenza
  - 24"d X 36"w
- 4 **Optional Accessories**
  - Clamp Mount Monitor Arm
    - Available Single or Double
  - Revi Mobile Pedestal with Cushion



**AMQ private office option E**



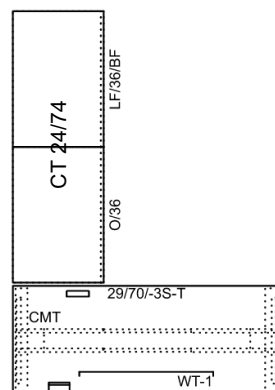
- 1** Fixed Height Desk
  - 30"d X 72"w
  - Laminate Top with Metal Post Legs
- 2** Laminate Modesty Panel
  - 48"w x 13"h
- 3** Activ Electric Height Adjustable Desk
  - Stage 3, 29"d X 46"w
  - Laminate Top with Metal T Leg
  - Cable Management and Boost Desktop Power Module in White
- 4** Revi Mobile Pedestal
  - Verve Fabric Cushion Top
  - Drawer/File Configuration and Pencil Tray
- 5** **Optional Accessories**
  - Clamp Mount Monitor Arm
  - Available Single or Double



## AMQ private office option F



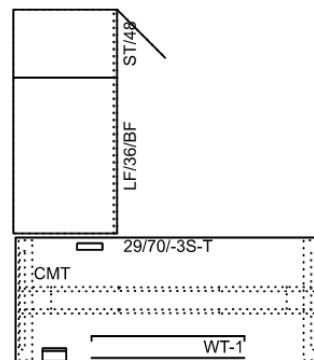
- 1 **Activ Electric Height Adjustable Desk**
  - Stage 3, 29"d X 70"w
  - Laminate Top with Metal T Leg
  - Cable Management and Boost Desktop Power Module in White
- 2 **Laminate 1.5h Box/Drawer Credenza**
  - 24"d X 36"w
  - Metal Ledge Pull
  - Locking
- 3 **Laminate 1.5h Open/Open Credenza**
  - 24"d X 36"w
- 4 **Optional Accessories**
  - Clamp Mount Monitor Arm
    - Available Single or Double
  - Revi Mobile Pedestal with Cushion



## AMQ private office option G

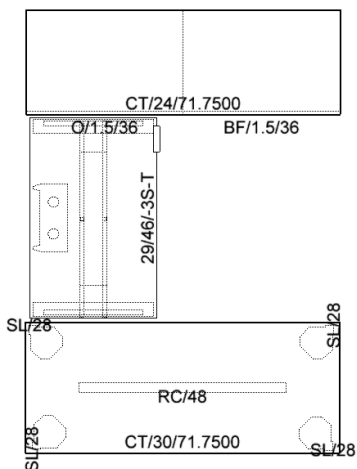


- 1** Activ Electric Height Adjustable Desk
  - Stage 3, 29"d X 70"w
  - Laminate Top with Metal T Leg
  - Cable Management and Boost Desktop Power Module in White
- 2** Laminate 1.5h Box/Drawer Credenza
  - 24"d X 36"w
  - Metal Ledge Pull
  - Locking
- 3** Laminate Storage Tower
  - 24"d x 16"w x 48"h
  - Box/Drawer and Closed Door Shelving
  - Metal Ledge Pull
  - Locking
- 4** **Optional Accessories**
  - Clamp Mount Monitor Arm
    - Available Single or Double
  - Revi Mobile Pedestal with Cushion



## AMQ private office option H

- 1** Fixed Height Desk
  - 30"d X 72"w
  - Laminate Top with Metal Post Legs
- 2** Laminate Modesty Panel
  - 48"w x 13"h
- 3** Activ Electric Height Adjustable Desk
  - Stage 3, 29"d X 46"w
  - Laminate Top with Metal T Leg
  - Cable Management and Boost Desktop Power Module in White
- 4** Laminate 1.5h Box/Drawer Credenza
  - 24"d X 36"w
  - Metal Ledge Pull
  - Locking
- 5** Laminate 1.5h Open/Open Credenza
  - 24"d X 36"w
- 6** **Optional Accessories**
  - Clamp Mount Monitor Arm
    - Available Single or Double
  - Revi Mobile Pedestal with Cushion



# AMQ private office finish options



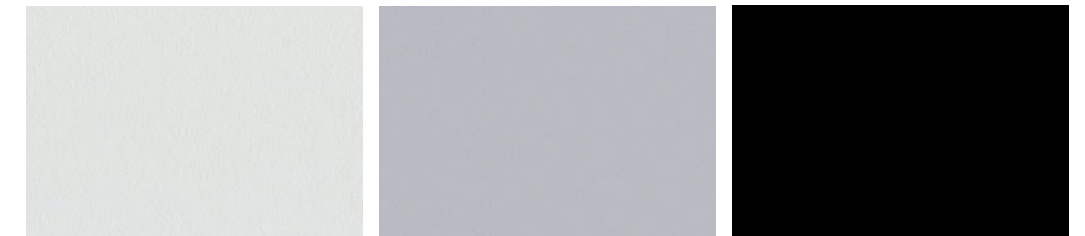
## metal ledge pull



platinum

black

## paint

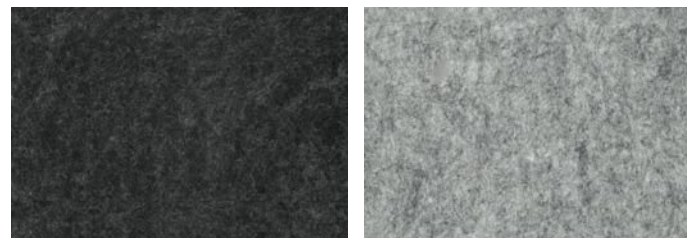


arctic white

platinum

black

## screen felt and cushion top



verve briquette

verve ash



verve celestial

verve seafoam

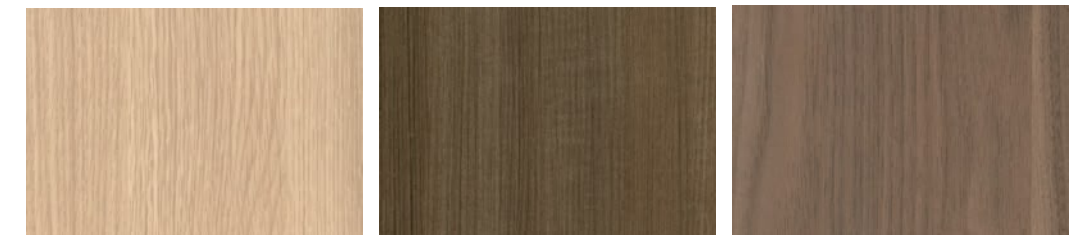
## lamininate



acacia

arctic white

clay noce



clear oak

graphite walnut

virginia walnut

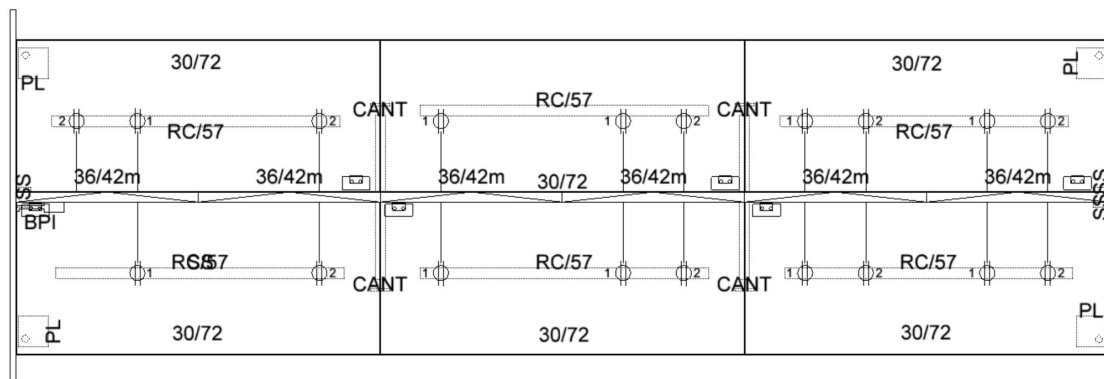


# AMQ benching

# AMQ benching option A



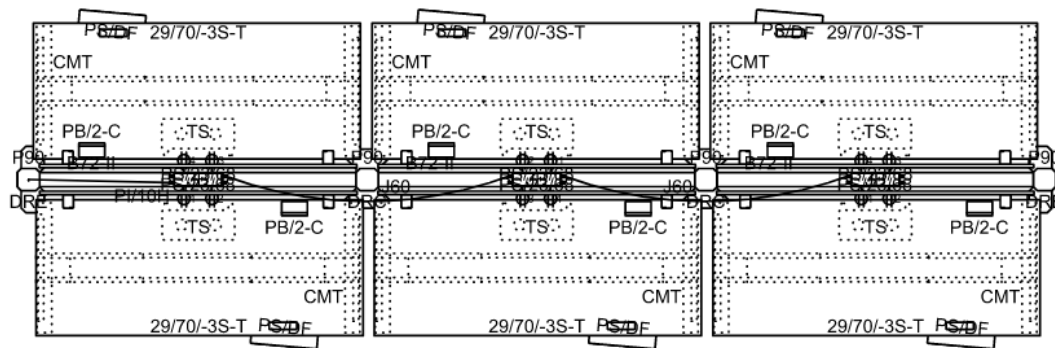
- 1 Tektis Panel System**
  - Two Duplex Receptacles per Workstation
  - 42”h Fabric skin panels
  - Base Power Infeed
  - 42”h Laminate Gallery Panels at ends of runs
- 2 Fixed Worksurfaces**
  - 30”d x 72”w
  - Laminate Top with cantilevers
  - Cable Management, Power Module in White
- 3 Revi Mobile Pedestal**
  - Verve Fabric Cushion Top
  - Single Drawer Configuration
- 4 Optional Accessories**
  - Clamp Mount Monitor Arm
  - Available Single or Double



# AMQ benching option B



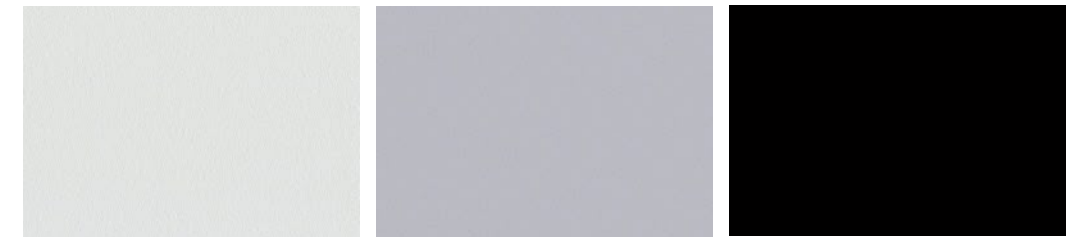
- 1** Iline Power Beam
  - Two Duplex Receptacles per Workstation
  - Base Power Infeed
- 2** Active Electric Height Adjustable Desk
  - Stage 3, 29”d x 70”w
  - Laminate Top with Metal T Legs
  - Cable Management and Boost Desktop Power Module in White
- 3** Revi Mobile Pedestal
  - Verve Fabric Cushion Top
  - Drawer/File Configuration and Pencil Tray
- 4** Fabric Privacy/Modesty Screen
  - 68”w x 23”h
  - Clamp Mounted to Height Adjustable Desk
  - Verve Fabric
- 5** **Optional Accessories**
  - Clamp Mount Monitor Arm
  - Available Single or Double



# AMQ benching finish options



## paint

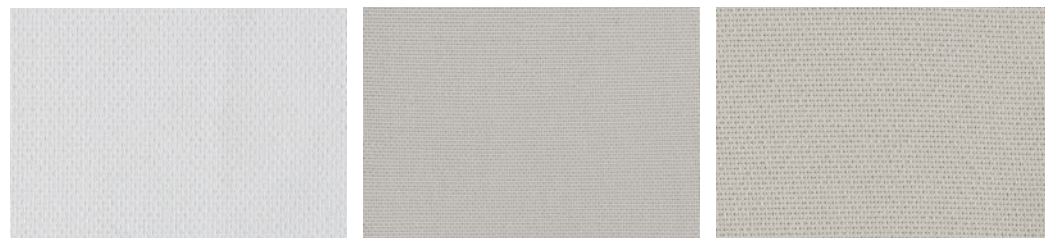


arctic white

platinum

black

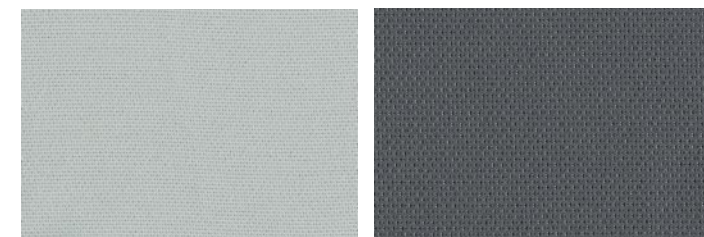
## panel fabrics



alloy polar

alloy bubbly

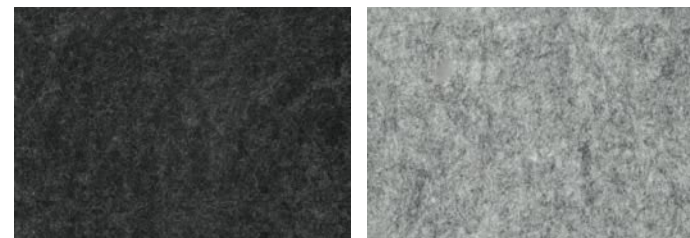
alloy asti



alloy silver

alloy currency

## screen felt and cushion top



verve briquette

verve ash



verve celestial

verve seafoam

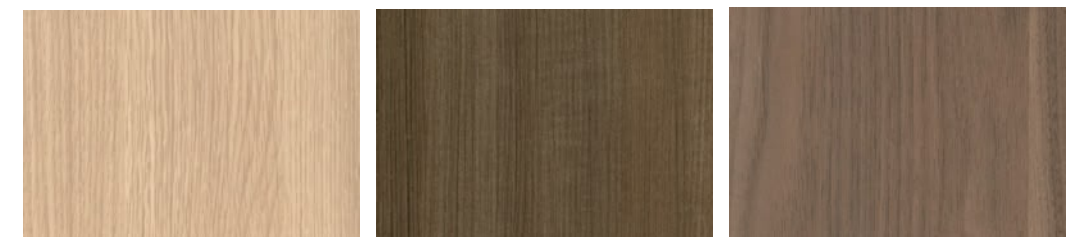
## laminates



acacia

arctic white

clay noce



clear oak

graphite walnut

virginia walnut

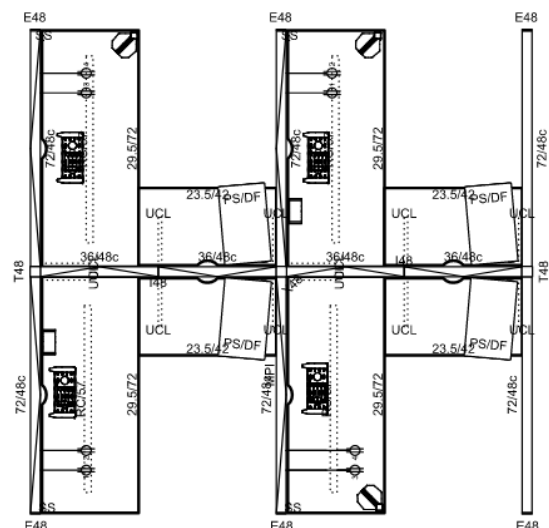


# AMQ workstations

**AMQ workstation option A**



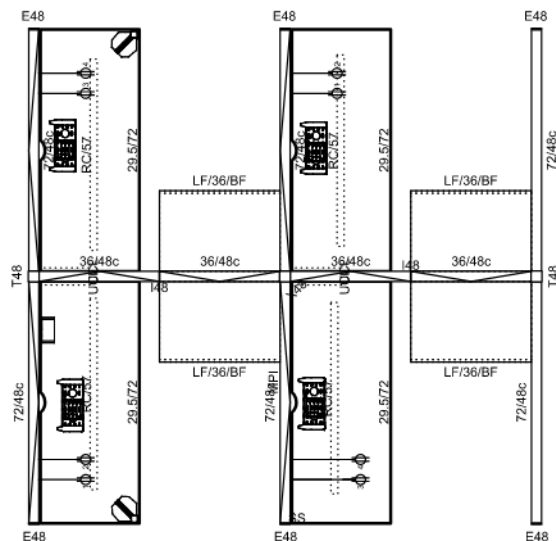
- 1 Answer Panels**
  - 48”h, Tackable Acoustical Fabric
  - Monolithic Panels
  - Base Power with Two Duplex Receptacles Per Workstation
  - Base Power Infeed
- 2 Fixed Height Desk**
  - 30”d X 72”w
  - Laminate Top with Metal Post Legs
  - Cable Management and Boost Desktop Power Module in White
- 3 Fixed Height Laminate Return**
  - 24”d X 42”w
- 4 Revi Mobile Pedestal**
  - Verve Fabric Cushion Top
  - Drawer/File Configuration and Pencil Tray
- 5 Optional Accessories**
  - Clamp Mount Monitor Arm
  - Available Single or Double



# AMQ workstation option B



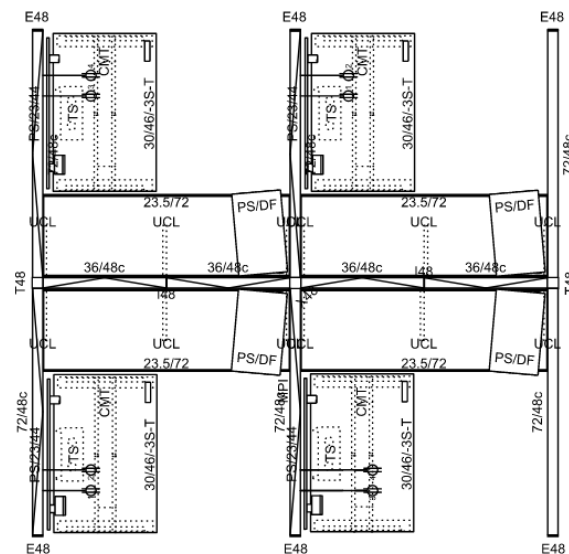
- 1 Answer Panels**
  - 48”h, Tackable Acoustical Fabric
  - Monolithic Panels
  - Base Power with Two Duplex Receptacles Per Workstation
  - Base Power Infeed
- 2 Fixed Height Desk**
  - 30”d X 72”w
  - Laminate Top with Metal Post Legs
  - Cable Management and Boost Desktop Power Module in White
- 3 Laminate 1.5h Box/Drawer Credenza**
  - 24”d X 36”w
  - Metal Ledge Pull
  - Locking
- 4 Optional Accessories**
  - Clamp Mount Monitor Arm
  - Available Single or Double
  - Revi Mobile Pedestal with Cushion



**AMQ workstation option C**



- 1** Answer Panels
  - 48”h, Tackable Acoustical Fabric Monolithic Panels
  - Base Power with Two Duplex Receptacles Per Workstation
  - Base Power Infeed
- 2** Activ Electric Height Adjustable Desk
  - Stage 3, 29”d X 46”w
  - Laminate Top with Metal T Leg
  - Cable Management and Boost Desktop Power Module in White
- 3** Fixed Height Laminate Return
  - 24”d X 72”w
- 4** Revi Mobile Pedestal
  - Verve Fabric Cushion Top
  - Drawer/File Configuration and Pencil Tray
- 5** Fabric Privacy/Modesty Screen
  - 44”w x 23”h
  - Clamp Mounted to Height Adjustable Desk
  - Verve Fabric
- 6** **Optional Accessories**
  - Clamp Mount Monitor Arm
  - Available Single or Double

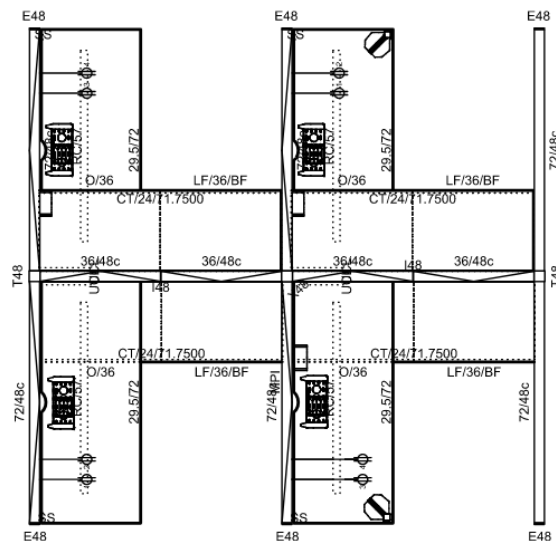


# AMQ workstation option D



- 1 Answer Panels**
  - 48”h, Tackable Acoustical Fabric Monolithic Panels
  - Base Power with Two Duplex Receptacles Per Workstation
  - Base Power Infeed
- 2 Fixed Height Desk**
  - 30”d X 72”w
  - Laminate Top with Metal Post Legs
  - Cable Management and Boost Desktop Power Module in White
- 3 Laminate 1.5h Box/Drawer Credenza**
  - 24”d X 36”w
  - Metal Ledge Pull
  - Locking
- 4 Laminate 1.5h Open/Open Credenza**
  - 24”d X 36”w
- 5 Optional Accessories**
  - Clamp Mount Monitor Arm
  - Available Single or Double

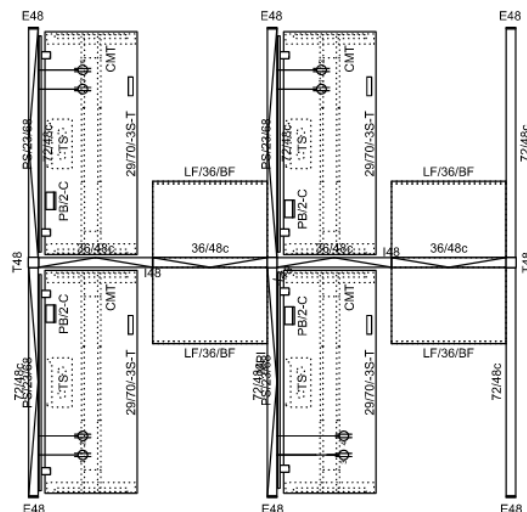
Revi Mobile Pedestal with Cushion



**AMQ workstation option E**



- 1 Answer Panels**
  - 48”h, Tackable Acoustical Fabric
  - Monolithic Panels
  - Base Power with Two Duplex Receptacles Per Workstation
  - Base Power Infeed
- 2 Active Electric Height Adjustable Desk**
  - Stage 3, 29”d X 70”w
  - Laminate Top with Metal T Leg
  - Cable Management and Boost Desktop Power Module in White
- 3 Laminate 1.5h Box/Drawer Credenza**
  - 24”d X 36”w
  - Metal Ledge Pull
  - Locking
- 4 Fabric Privacy/Modesty Screen**
  - 68”w x 23”h
  - Clamp Mounted to Height Adjustable Desk
  - Verve Fabric
- 5 Optional Accessories**
  - Clamp Mount Monitor Arm
  - Available Single or Double
  - Revi Mobile Pedestal with Cushion



# AMQ workstation finish options



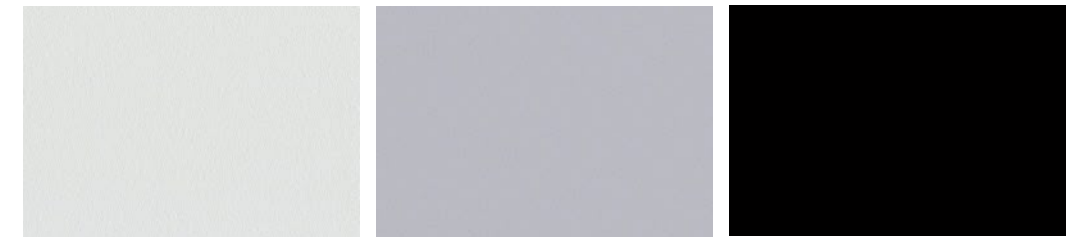
## metal ledge pull



platinum

black

## paint

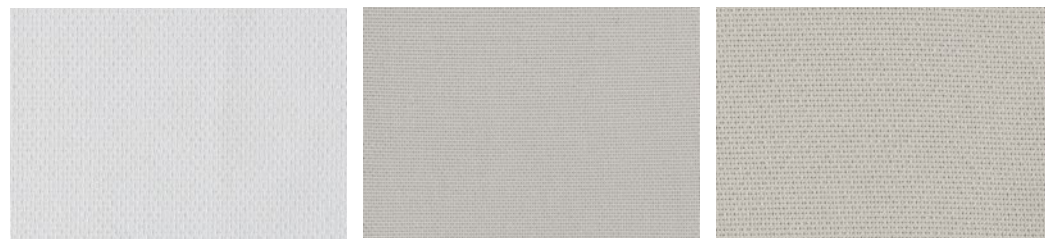


arctic white

platinum

black

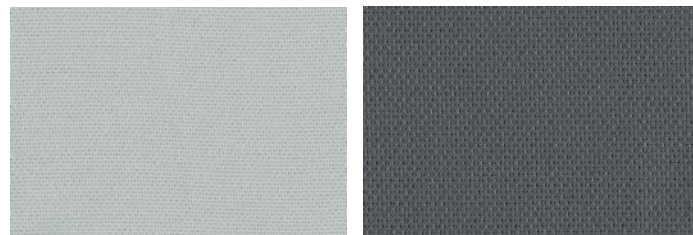
## panel fabrics



alloy polar

alloy bubbly

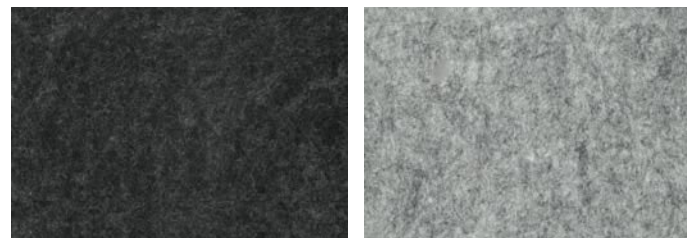
alloy asti



alloy silver

alloy currency

## screen felt and cushion top



verve briquette

verve ash



verve celestial

verve seafoam

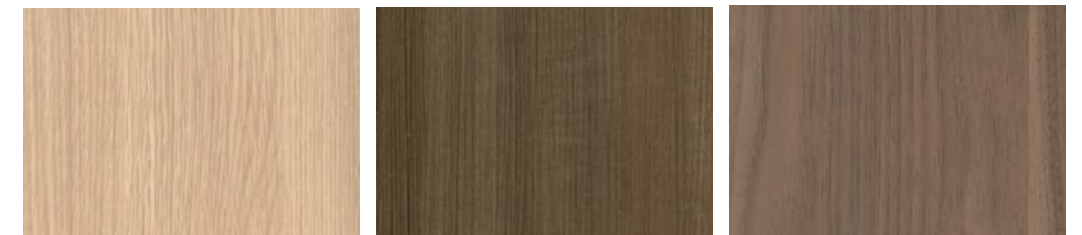
## laminates



acacia

arctic white

clay noce



clear oak

graphite walnut

virginia walnut



**AMQ accessories**

monitor arm + HAT



Steelcase  
Intro Monitor Arm

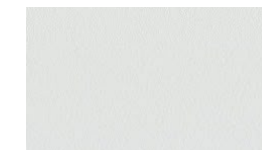
- C-Clamp Mount
- Pewter finish



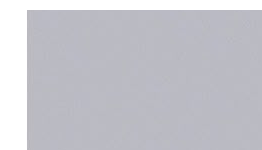
AMQ HAT

- Activ Electric Height Adjustable Desk
- Stage 3, 29"d x 72"w
  - Laminate Top with Metal T Leg
  - Cable Management and Boost Desktop Power Module in white

paint



arctic white

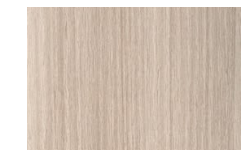


platinum



black

laminate



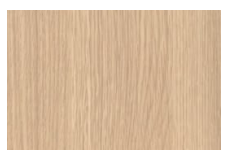
acacia



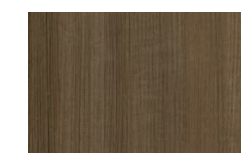
arctic white



clay noce



clear oak



virginia walnut

storage



Revi Mobile Pedestal

- Painted Metal Case with Casters
- Verve Fabric Cushion Top
- Drawer/File Organization
- Pencil Tray

fabric options for cushion top



AMQ Lateral File

- Laminate 1.5H Lateral File
- 24"D x 36"W
  - Drawer/File Organization

metal ledge pull



platinum



black

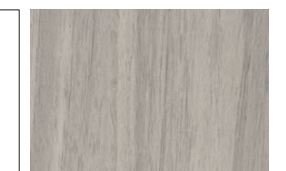
laminate



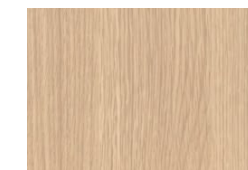
acacia



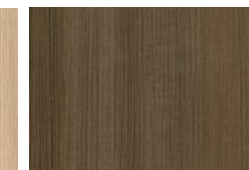
arctic white



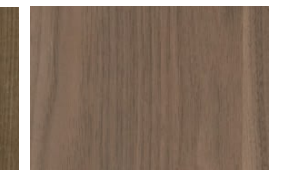
clay noce



clear oak



graphite walnut



virginia walnut

storage



AMQ Tower

- Laminate Storage Tower
- 24”d x 16”w x 48”h
  - Box/File drawers at bottom, storage cabinet above



AMQ Storage Credenza

- Laminate 1.5H Credenza
- 24”D x 72”W
  - Drawer/File Organization

metal ledge pull

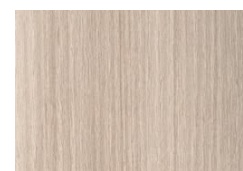


platinum



black

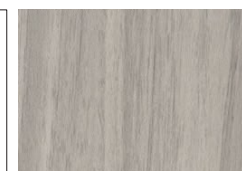
laminate



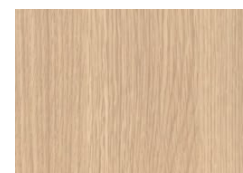
acacia



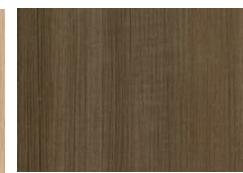
arctic white



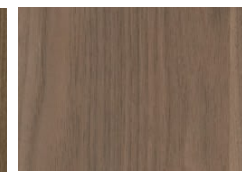
clay noce



clear oak



graphite walnut

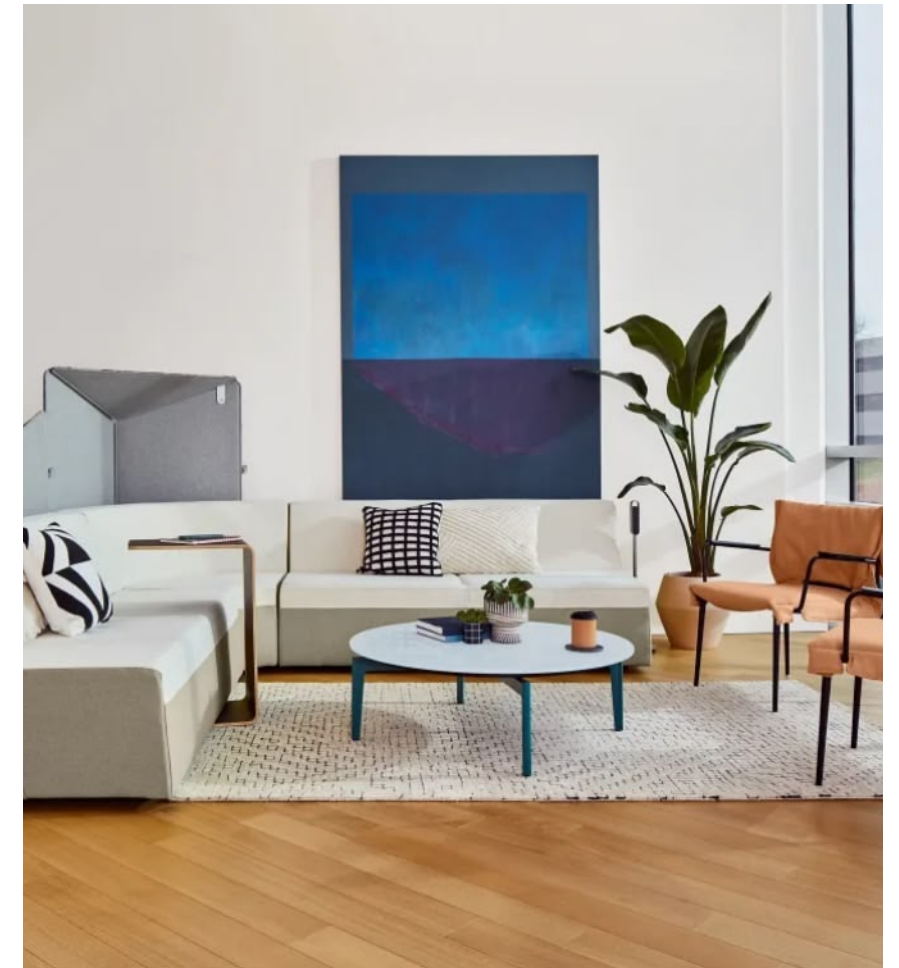


virginia walnut

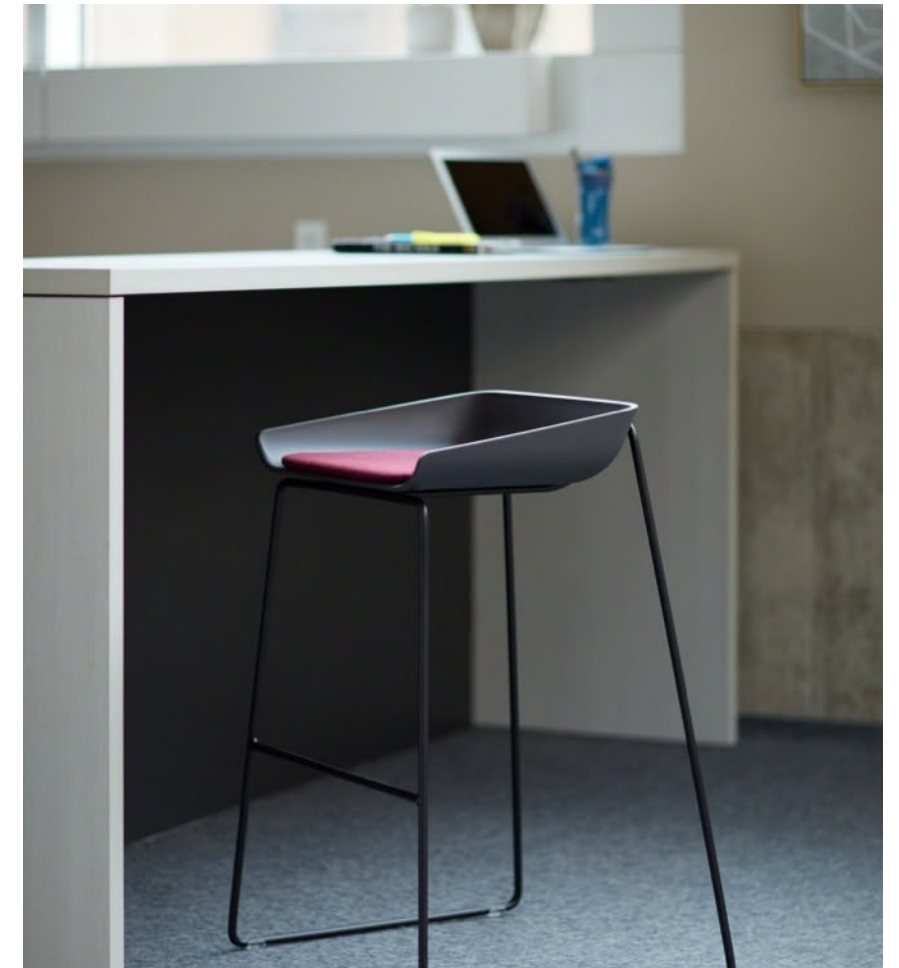


**ancillary spaces**

inspiration for your social + collaboration space



inspiration for your café space

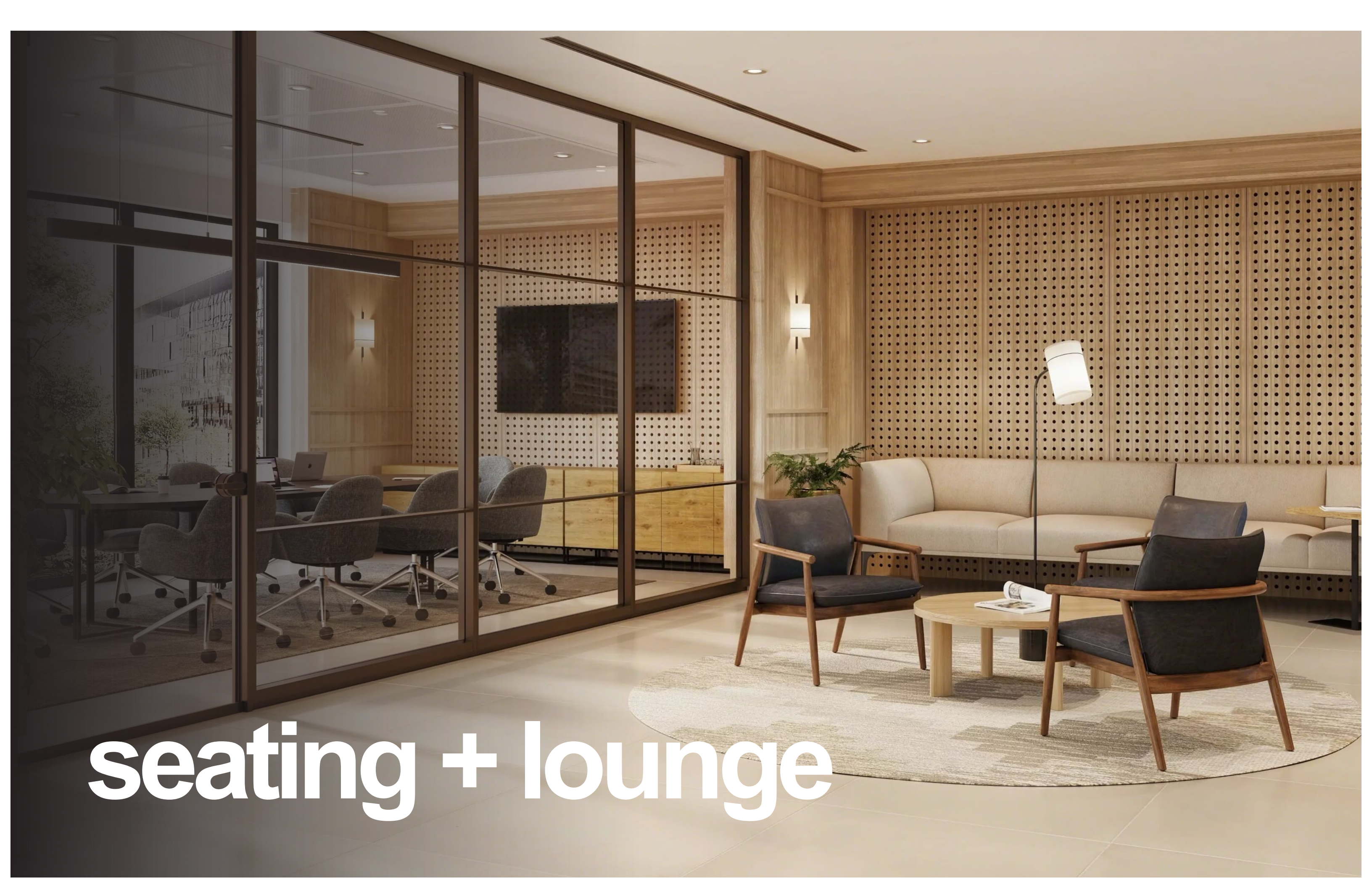


inspiration for your meeting space



inspiration for your focus + private space





**seating + lounge**



**SitOnIt Wit  
Mid-Back**

- Black or Fog Scheme
- Upholstered seat
- H/W Adjustable Arms
- No Lumbar
- Black or Fog Frame and Base
- Carpet Casters



**SitOnIt Torsa**

- High Onyx Mesh Back
- Upholstered seat
- Multi Adjustable Arms
- No Lumbar
- Graphite Frame and Base
- Carpet Casters



**SitOnIt Sona**

- Upholstered seat and back
- Multi Adjustable Arms
- Sivel tilt control
- Plastic Pull Handle on top of back
- Carpet Casters



**Friant Yele**

- Black Mesh Back
- Black Upholstered Seat
- 3D Armrest
- Adjustable Lumbar
- Black Frame and Base
- Carpet Casters



**Friant Zone Too**

- Black Mesh Back
- Black Upholstered Seat
- Height Adjustable Armrest
- Black Frame and Base
- Carpet Casters



**Friant Tango**

- Black Mesh Back
- Black Upholstered Seat
- 3D Armrest
- Adjustable Lumbar
- Black Frame and Base
- Carpet Casters



**AMQ Personality  
Plus**

- Black Mesh Back
- Upholstered Seat
- 4-Way Adjustable Arm
- Adjustable Lumbar
- Black Frame and Base
- Carpet Casters



**HON Ignition 2.0  
Mid-Back**

- Black Mesh Back and Seat
- H/W Adjustable Arms
- No Lumbar
- Black Frame and Base
- Carpet Casters



**Steelcase Series 1**

- Black 3D Micro knit Back
- Upholstered Seat
- 4-Way Adjustable Arms
- Fixed Lumbar
- Black Frame and Base
- Carpet Casters



**Steelcase Series 2**

- Black 3D Micro knit Back
- Upholstered Seat
- 4-Way Adjustable Arms
- Adjustable Lumbar
- Black Frame and Base
- Carpet Casters



**Steelcase Amia**

- Upholstered Seat and Back
- 4 Way Adjustable Arms
- No Lumbar
- Black Frame and Base
- Carpet Casters



**Steelcase Think**

- Black 3D Micro knit Back
- Upholstered Seat
- 4-Way Adjustable Arms
- Adjustable Lumbar
- Black Frame and Base
- Carpet Casters



**Steelcase Leap**

- Upholstered Seat and Back
- 4-Way Adjustable Arms
- Adjustable Lumbar
- Black Frame
- Carpet Casters



**Steelcase Gesture**

- Upholstered Seat and Back
- Shell Outer Back
- 4-Way Adjustable Arms
- Adjustable Lumbar
- Black Frame and Base
- Carpet Casters



**SitOnIt Clova**

- Upholstered Seat And Back
- Armless
- 4-Leg wood base

Part of seating family



**SitOnIt Clova**

- Upholstered Seat And Back
- Armless
- 4-Star metal base
- Fixed Height
- Auto return swivel

Part of seating family



**SitOnIt Axys**

- Upholstered Seat And Back
- Armless
- Steel wire rod frame

Part of seating family



**SitOnIt Freelance**

- Upholstered Seat and Back
- Fixed Arms
- Black Steel Frame
- Stacks Up To 4 High



**Friant Jest**

- Upholstered Seat and Back
- Metal Silver Legs
- Glides



**Friant Axiom**

- Black Mesh Back
- Black Upholstered Seat
- Black Fixed Arms
- Silver Legs



**Global Drift**

- Upholstered Seat And Back
- Maple Wood Legs



**KFI Studios Zoso**

- 360 Degree Swivel
- Faux Leather Seat and Back
- Black Steel Frame



**HON Ruck**

- Pinnacle Walnut Laminate Shell
- Silver Frame
- Stacks Up To 6 High



**HON Ignition**

- Black Mesh Back
- Black Contourett Faux Leather Seat and Back, Black Stitching
- Fixed Arms
- Black Frame
- Glides



**SitOnIt Rowdy**

- Built In Handle
- Plastic Seat And Back
- Chrome Frame
- Clear Glides
- Stacks Up To 15



**SitOnIt Rio**

- Upholstered Seat and Back
- Armless
- Wire Rod base
- Stacks Up To 4 High

Part of seating family



**SitOnIt Rio**

- Plastic Seat And Back
- Black 4 Leg Base
- Stacks Up To 4 High

Part of seating family



**Steelcase Node**

- Flexible Plastic seat and Back
- Solid Maple Wood base with crossbars
- Arms to support side sitting and serve as a backpack hook.
- Polyethylene Glide

Part of seating family



**Steelcase Node**

- Flexible Plastic Seat and Back
- Five Star Base
- Seat Height Adjusts with Pneumatic adjustments
- Arms to support side sitting and serve as a backpack hook.
- Hard Dual Wheel Casters

Part of seating family



**Steelcase Node**

- Flexible Plastic seat and Back
- Steel Wire Frame
- Arms to support side sitting and serve as a backpack hook.
- Hard Glide

Part of seating family



**Steelcase Simple**

- All Plastic
- Optional Cushion Seat
- Stacks Up To 4 High

Part of seating family



**Steelcase Move**

- Arctic White Plastic Back
- Upholstered Seat
- Platinum Metallic Legs
- Stacks up to 5 High

# stools



### SitOnIt Rio Counter Stool

- Plastic Seat And Back
- Black 4 Leg Base

Part of seating family



### SitOnIt Axys Counter Stool

- Upholstered Seat and Back
- Wire Rod Base
- Armless

Part of seating family



### Steelcase Node Stool

- Flexible Plastic seat and Back
- Steel Wire Frame
- Height Range 40-48"H
- Arms to support side sitting and serve as a backpack hook.
- Hard Glide

Part of seating family



### SitOnIt Rio Barstool

- Plastic Seat And Back
- Black 4 Leg Base

Part of seating family



### SitOnIt Axys Barstool

- Upholstered Seat and Back
- Wire Rod Base
- Armless

Part of seating family



### Steelcase Node Barstool

- Flexible Plastic seat and Back
- Steel Wire Frame
- Arms to support side sitting and serve as a backpack hook.
- Hard Glide

Part of seating family



### Steelcase Simple Barstool

- All Plastic
- Optional Cushion Seat

Part of seating family



**SitOnIt Rio**

- Plastic Seat and Back
- Fixed Arms
- Black 4 Leg Base
- Carpet Casters

Part of seating family



**SitOnIt Clova**

- Fully Upholstered
- Height-Adj Mech
- 5 Star Base in Polished Aluminum
- Carpet Casters

Part of seating family



**SitOnIt Axys**

- Fully Upholstered
- Height-Adj Mech
- 5 Star Base in Polished Aluminum
- Armless
- Carpet Casters

Part of seating family



**SitOnIt Sephen**

- Upholstered seat and back
- Swivel tilt
- Fixed arms
- Carpet Casters
- High back

Part of seating family



**SitOnIt Sephen**

- Upholstered seat and back
- Swivel tilt
- Fixed arms
- Carpet Casters
- Low back

Part of seating family



**SitOnIt Sona**

- Upholstered Seat and Back
- Fixed Black Arms
- Black Pull Handle
- Black Base
- Carpet Casters



**AMQ Tizu Nesting**

- Flip Nesting Seat
- Black Mesh Back
- Upholstered Seat
- Fixed Plastic Arms
- Black Frame
- Chrome Base
- Carpet Casters



**HON Cofi Managerial**

- Contourett Faux Leather Seat and Back
- Black Channel Stitching
- Fixed Chrome Arms
- Chrome Base
- Black Casters



**Friant Alder**

- Fully Upholstered
- Metal Base



**Steelcase  
Campfire**

- Half Lounge, Single Seat
- Fully Upholstered



**SitOnIt Cameo**

- Three Seat Sofa
- Fully Upholstered
- Metal Base In Charcoal Finish

Part of seating family



**SitOnIt Gobi**

- Mid-back Lounge Chair
- Fully Upholstered
- Metal Swivel Base In Charcoal Finish



**Steelcase  
Campfire**

- Big Lounge, Double Seat
- Fully Upholstered



**SitOnIt Sable**

- Three Seat Sofa
- Arms
- Fully Upholstered
- Metal Base

Part of seating family



**SitOnIt Sable**

- Club Chair
- Arms
- Fully Upholstered
- Metal Base

Part of seating family



**SitOnIt Cameo**

- Single Seat
- Fully Upholstered
- Metal Base In Charcoal Finish

Part of seating family



**SitOnIt Axys**

- Upholstered Seat And Back
- Armless
- Steel wire rod frame

Part of seating family



**Global Drift**

- Ottoman
- Fully Upholstered



**SitOnIt Paseo Mini Ottoman**

- Graphite Base
- Fully Upholstered



**SitOnIt Parallon**

- Round Coffee Table, 30" diameter
- Laminate Top
- Metal X-Base



**Steelcase Campfire**

- Personal Table
- LPL Laminate Acacia



**Friant Roke Coffee Table**

- Round Coffee Table, 40" diameter
- Wood Veneer Top Mountain Walnut
- Metal X-Base Charcoal Grey



**Friant Roke Side Table**

- Round Coffee Table, 22" diameter
- Wood Veneer Top Mountain Walnut
- Metal X-Base Charcoal Grey



**Steelcase Simple**

- Lounge Height Personal Table
- 16"d x 26"w
- LPL Laminate Top
- Metal Base **\*\*only available in white and platinum paint**



**Steelcase Simple**

- Lounge Height Personal Table
- 36"d x 36"w
- LPL Laminate Top
- Metal Base **\*\*only available in white and platinum paint**

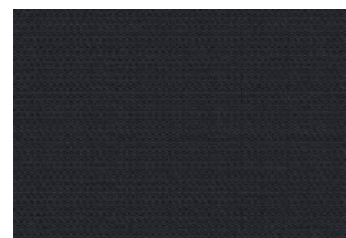


**Steelcase Simple**

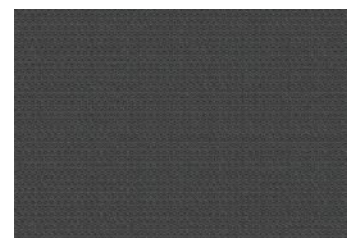
- Lounge Height Personal Table
- 30"d x 48"w
- LPL Laminate Top
- Metal Base **\*\*only available in white and platinum paint**

## AMQ seating upholstery options

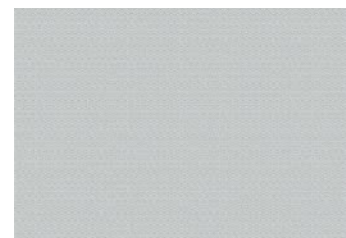
### Buzz – grade 1



black

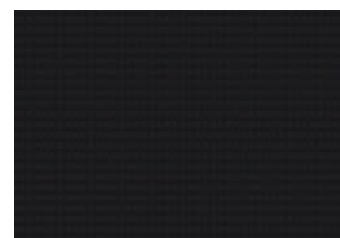


tornado



alpine

### mesh

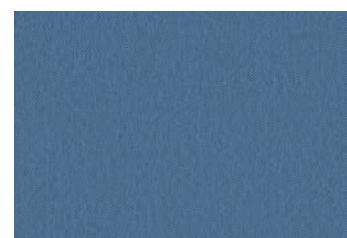


black

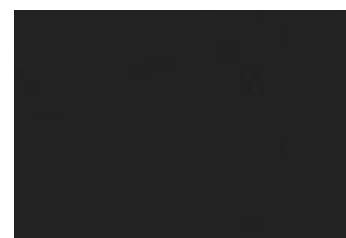
### Era – grade 1



royal blue



cobalt



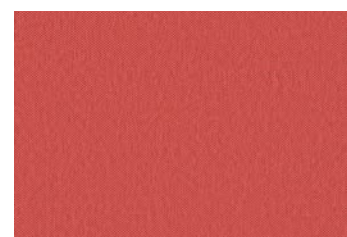
onyx



night owl



truffle

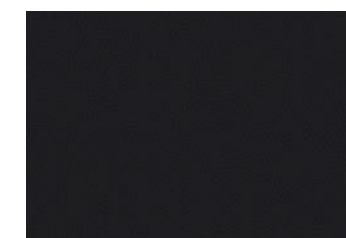


saffron



persimmon

### Brisa – grade 6



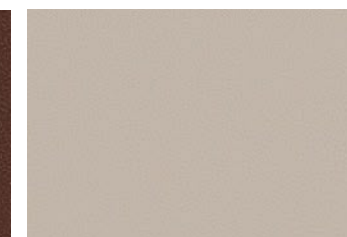
black onyx



caramel



bridle



bone

## Friant seating finish options

### Jest Options



steel



dusk

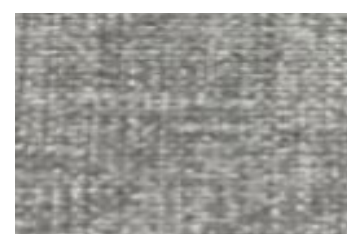


canary

### Adler Options



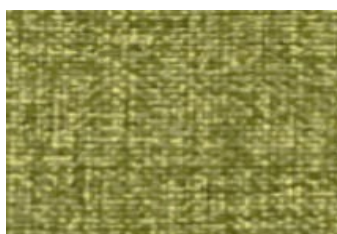
dune



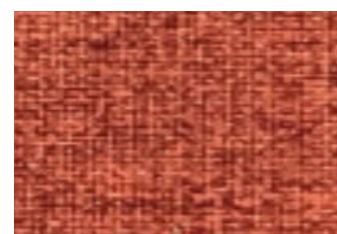
mist



cadet



pistachio



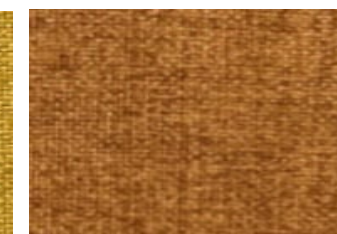
rust



wine



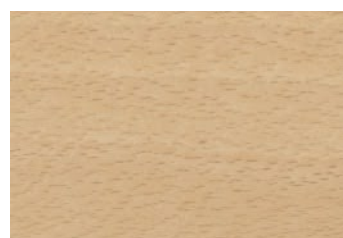
sunflower



yam

## Global seating finish options

### wood



maple

### metal



chrome

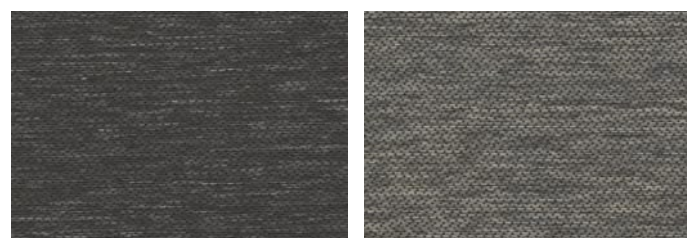
### Fusion – grade 1



sandstone

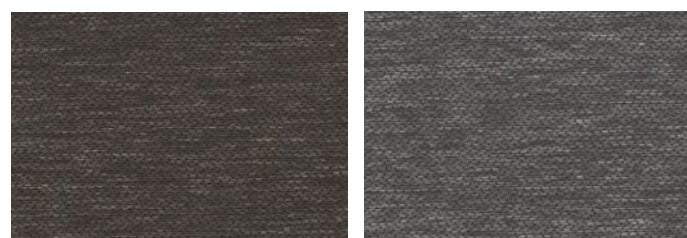
cadet

### Carrera – grade 1



charcoal

flannel

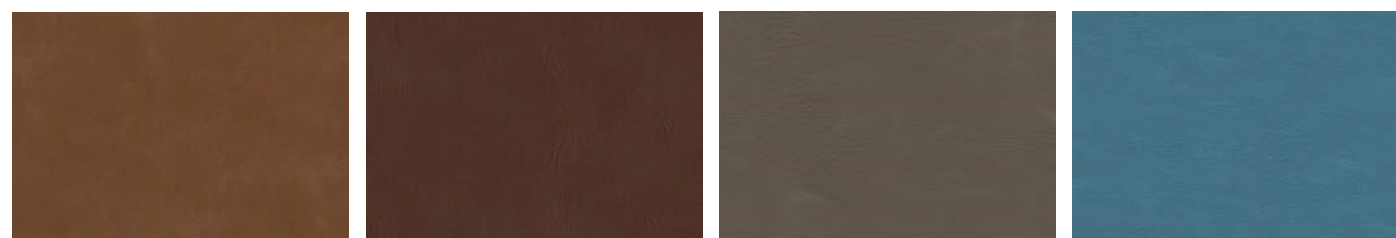


java

slate

## KFI seating finish options

faux leather



saddle

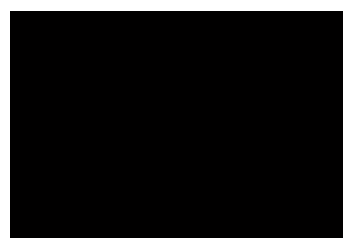
toffee

greystone

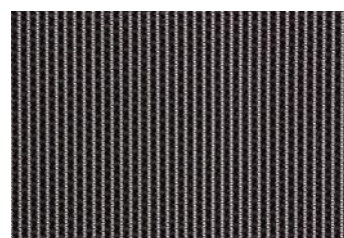
ocean

## SitOnIt task seating finish options

### Wit black scheme



black



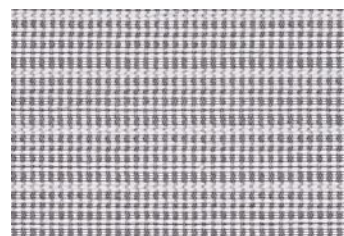
onyx mesh



### Wit fog scheme



fog



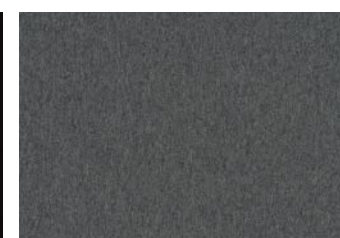
fog striped



### upholstered seat | Cue – grade 2



eightball



nickel



shark



fog

SitOnIt seating finish options

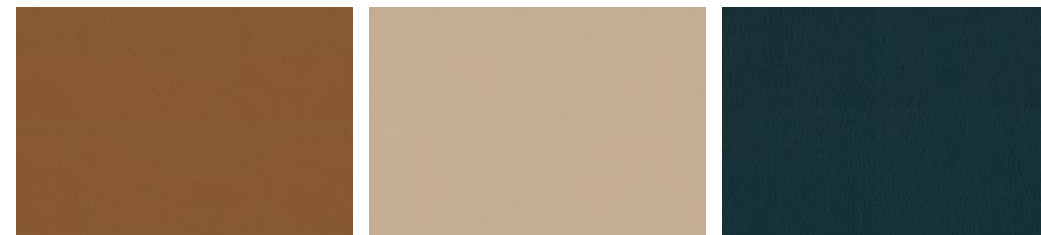
metal base



charcoal

polished aluminum

Element – grade 2 vinyl

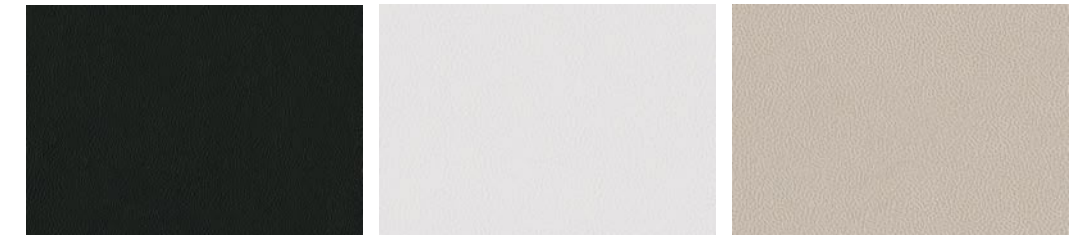


copper

pebble

tanzanite

plastic

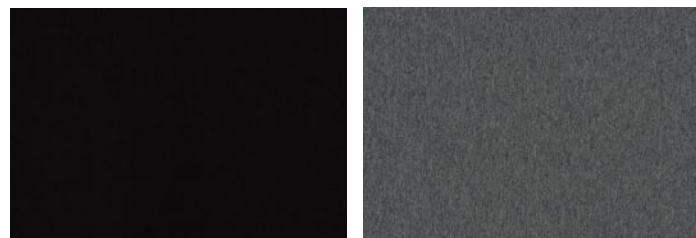


black

arctic

latte

Cue – grade 2



eightball

nickel

Laguna – grade 2



breeze

emerald



slate

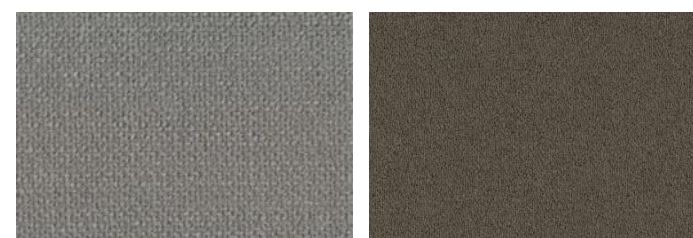
tangerine

lemon



shark

fog



eclipse

hearthstone



sterling

red

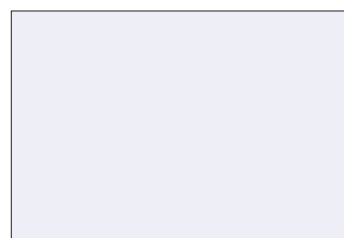
pacific

## SitOnIt table finish options

### laminate



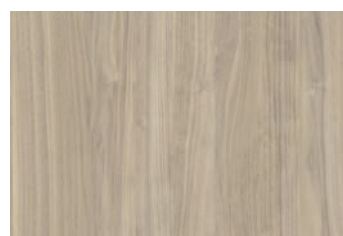
field elm



designer white



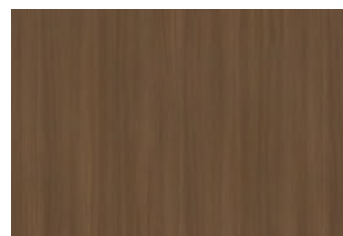
grey



kingswood walnut

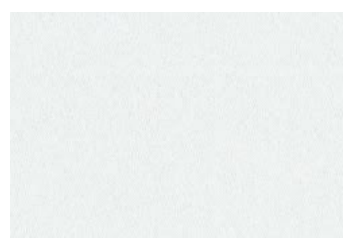


skyline walnut



neo walnut

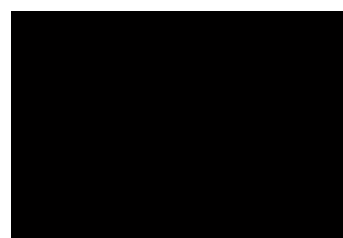
### paint



white



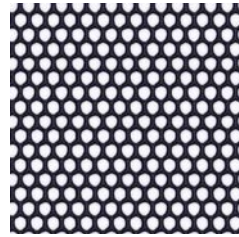
silver



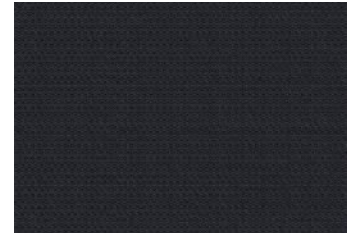
black

**Steelcase seating upholstery options**

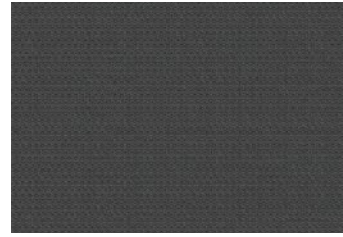
Buzz – grade 1



black mesh



black



tornado



alpine

Brisa – grade 6



black onyx



caramel



bridle

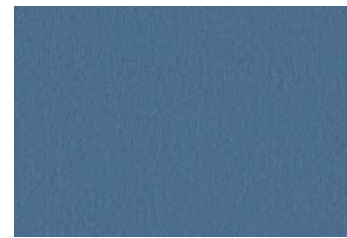


bone

Era – grade 1



royal blue



cobalt



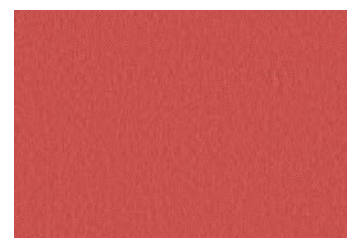
onyx



night owl



truffle



saffron

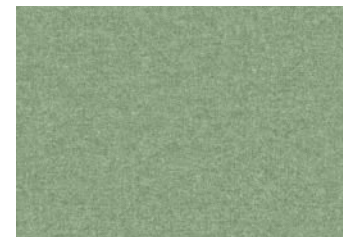


persimmon

Billiard – grade 3



storm cloud



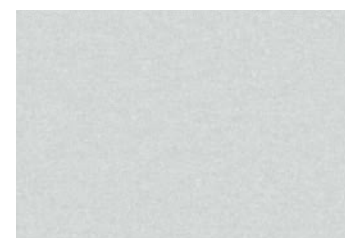
olivine



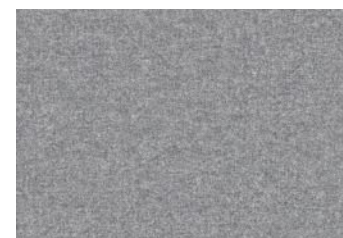
mallard



teak



cumulous



pewter



gun metal



ink

## Steelcase poly + lounge finish options

### paint



arctic white

platinum

black

### node seating plastic



black

merle

element

### laminata

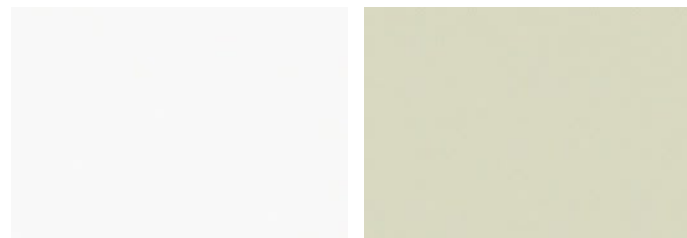


acacia

arctic white

clay noce

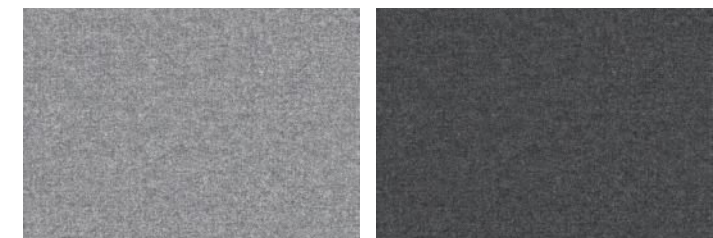
### simple seating plastic



milk textured

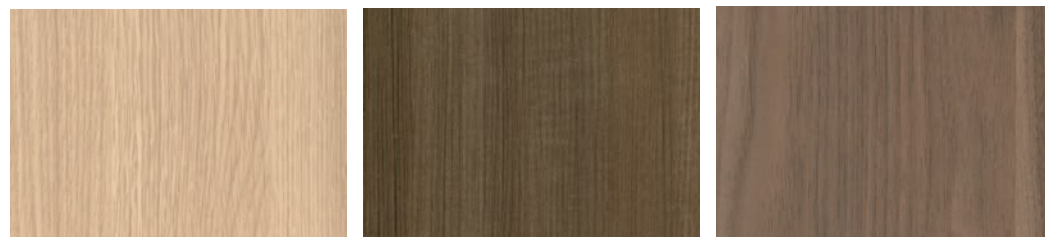
moss

### simple seating upholstered seat



billiard pewter

billiard ink



clear oak

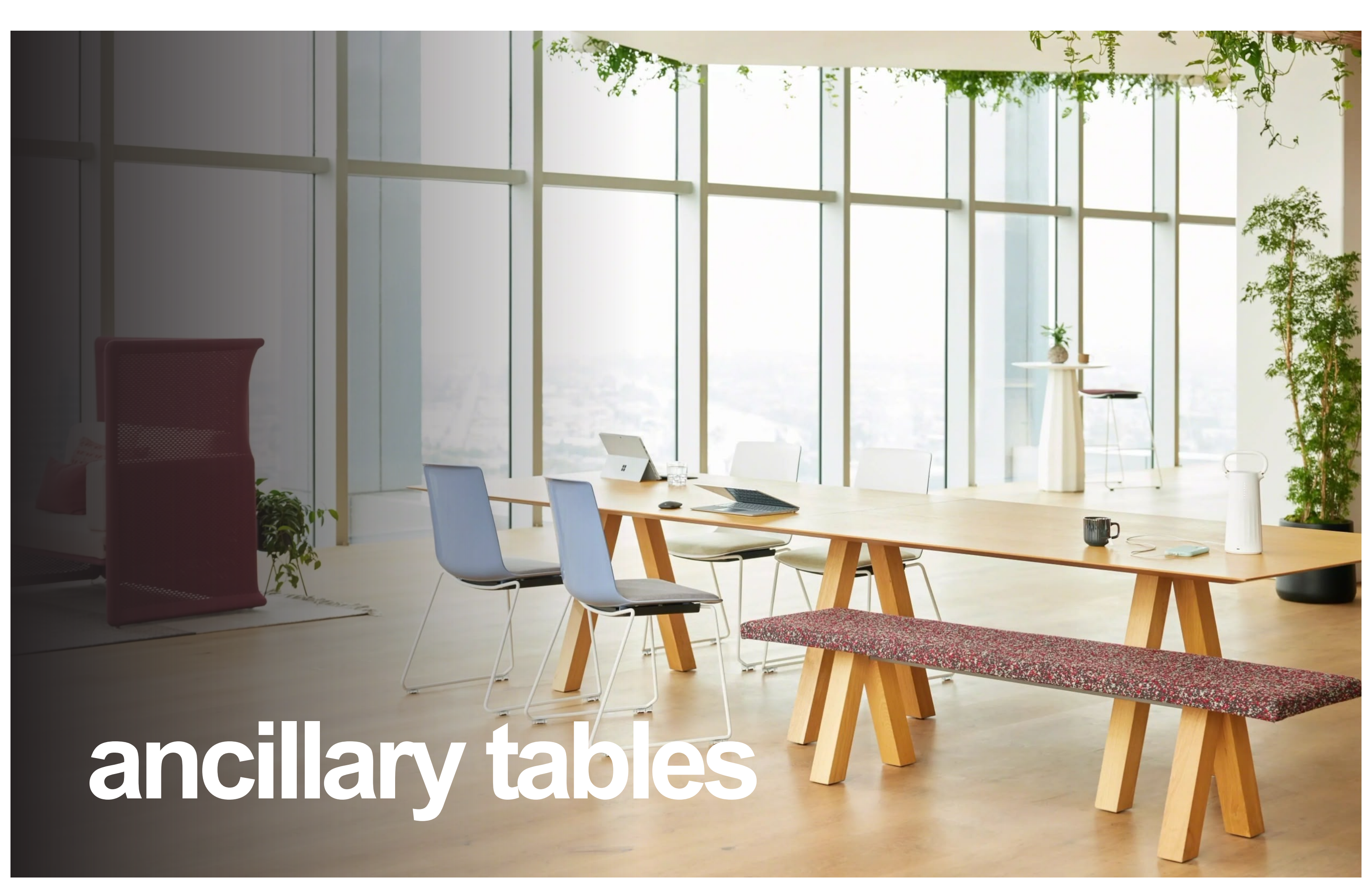
graphite walnut

virginia walnut



shale grey

black



**ancillary tables**

multi-purpose



**Steelcase Simple**

- LPL Laminate Top
- Metal Square Disc Base **\*\*only available in white and platinum paint**

Available Sizes

- 36" Square Table, 29"h
- 36" Round Table, 29"h
- 48" Square Table, 29"h
- 48" Round Table, 29"h
- Bar Height 30" Square Table, 42"h
- Bar Height 30" Round Table, 42"h



**Steelcase Simple**

- LPL Laminate Top
- Metal Post Legs **\*\*only available in white and platinum paint**
- 36"d x 72"w x 29"h



**SitOnIt Parallon**

- Laminate Top
- Metal X-Base

Available Sizes

- 36" Square Table, 29"h
- 36" Round Table, 29"h
- 48" Square Table, 29"h
- 48" Round Table, 29"h
- 30" Square Table, 42"h
- 30" Round Table, 42"h



**AMQ Concur**

- Push Button Flip Lock and Nest
- LPL Laminate Top
- Platinum Metallic Base
- Perforated Metal Modesty Panel in Graphite
- 24"d x 60"w
- No Power
- Locking Casters



**SitOnIt Parallon**

- Soft Close Flip Top with Quick Release Latch
- Laminate Top
- Flat Edge
- Platinum or Black Base
- Fabric Modesty Panel
- 30"d x 60"w
- Standalone Power Kit with Flip Top Power Lid in Silver
- Locking Casters



**AMQ Embank**

- Rectangle Conference Table
- LPL Laminate Top and Base
- Hinged Door Power Module with Plug Infeed

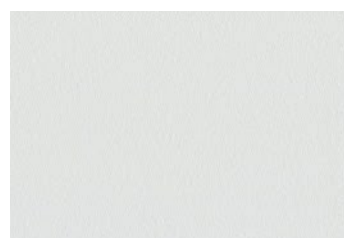
Available Sizes

- 36"d x 72"w, 29"h
- 48"d x 96"w, 29"h
- 48"d x 120"w, 29"h
- 48"d x 144"w, 29"h

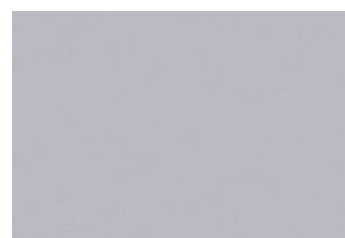


## AMQ table finish options

### paint

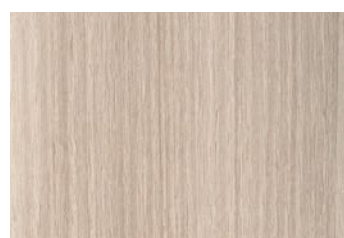


arctic white



platinum

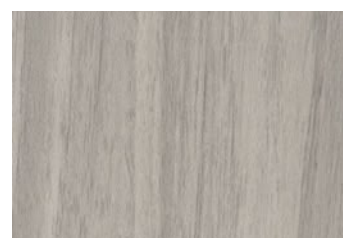
### laminate



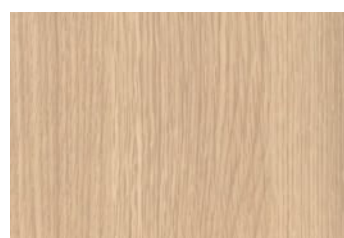
acacia



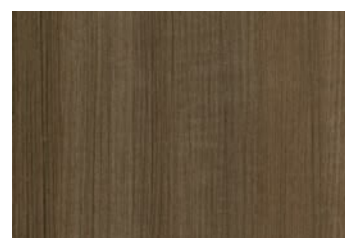
arctic white



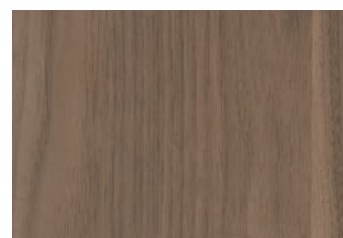
clay noce



clear oak



graphite walnut



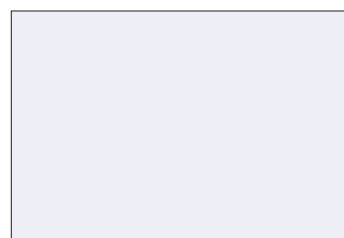
virginia walnut

## SitOnIt table finish options

### laminate



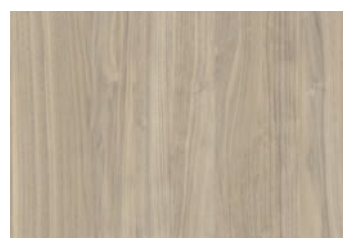
field elm



designer white



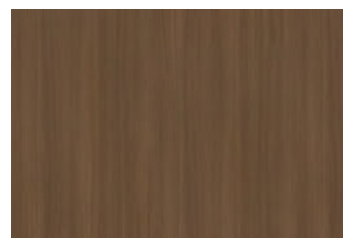
grey



kingswood walnut

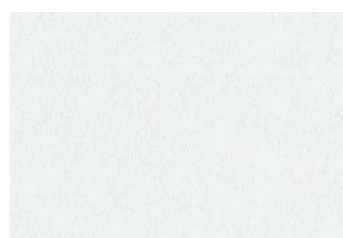


skyline walnut



neo walnut

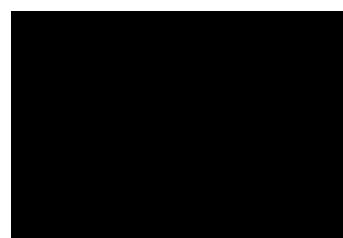
### paint



white



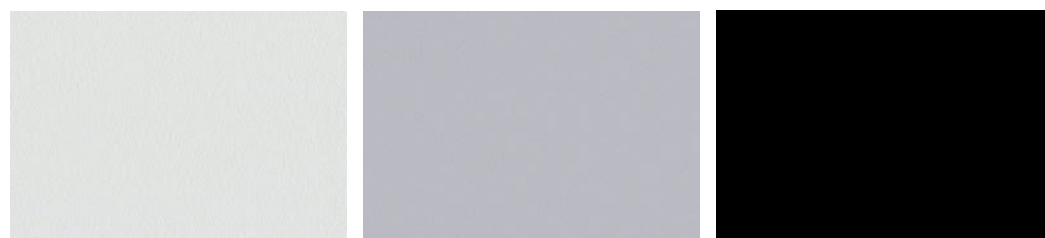
silver



black

## Steelcase table finish options

### paint



arctic white

platinum

black

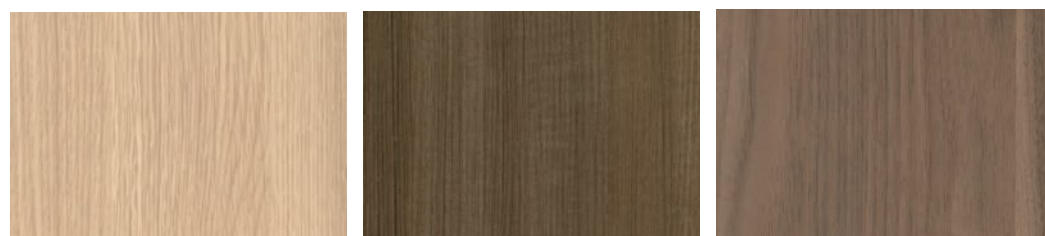
### laminate



acacia

arctic white

clay noce



clear oak

graphite walnut

virginia walnut



# Blu Dot ancillary



## Blu Dot

Blu Dot is a Minneapolis-based designer and maker of modern furnishings, spanning multiple home and office categories. Blu Dot's full product portfolio is available through the Steelcase partnership.

Your Slate contact can help advise you on which products are currently available in stock and ready to ship.



**Blu Dot bestsellers**



**Council Swivel Lounge Chair**  
shown in Garbo Grey



**Racer Counter Stool**  
shown in Maharam Tait Marine



**Bumper Large Ottoman**  
shown in Vesper Fabric



**Field Lounge Chair**  
shown in Storm Velvet



**Swole Small Table**  
shown in white, copper and black



**Good Times Coffee Table**  
shown in White Washed Ash



**Splash Coat Rack**  
shown in White, Tomato, Marine



**Buddy Barstool**  
shown in Walnut,



**Circula Tables**  
Low Side Table shown in Oblivion



**Bustle Sofa**  
shown in Copper Velvet



HQ | 2501 Blake Street, Denver, CO 80205 | Studio | 1445 Market Street, Suite 150 | 303.471.4334  
elementsofplace.com | place<sup>x</sup>